



Technical Bulletin

Issue#: 102

Date: 10/16/24

Subject: New Marine Elegance Mounting

Part #'s affected: 221230W (old), 241130W (new)

Improvement Summary:

Effective 03/01/24, a new mounting system was implemented to improve the ease of installation on all Marine Elegance models.

Additional information:

The new mounting system was implemented across the entire line after 2 years of zero installation issues on our Marine Elegance Comfort Models.

Models with the old style mounting can be retrofitted with part# 241130W.

Please see attached installation instructions for reference.

Questions regarding this change can be emailed to techsupport@raritaneng.com

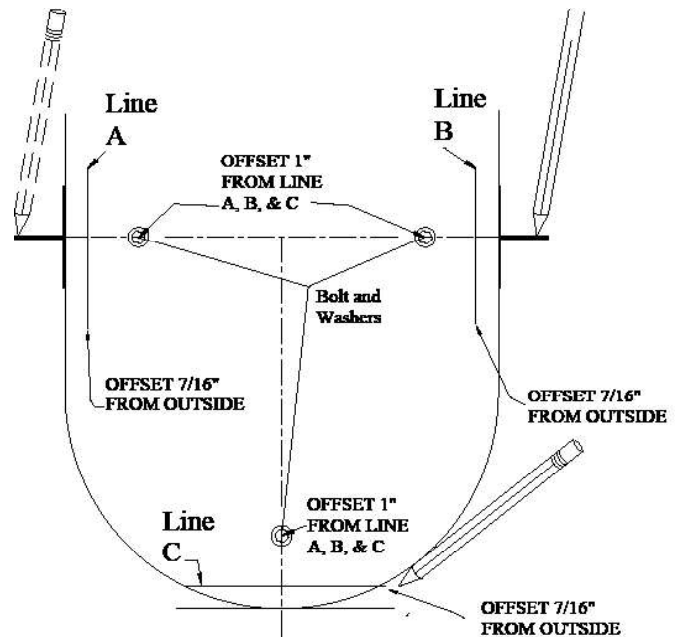
Mounting Toilet To Deck

The mounting surface must be flat and solid.

Place toilet in location to be mounted.
Trace outside edge of bowl.
Mark center of mounting holes. (3)
Remove toilet.

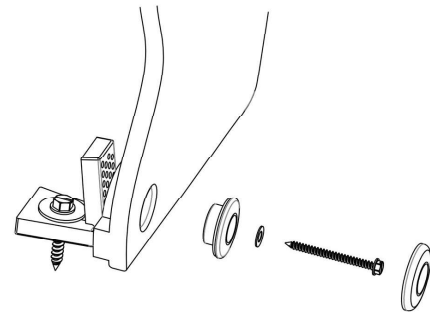
Offset traced line $\frac{7}{16}$ "
(Lines indicated A, B, & C. see FIG)

To mount bracket, drill (3) $\frac{7}{32}$ " holes, offset 1" from
Lines A, B, & C



Mount Bracket

Using lag bolt and washer, attach bracket, with upright
edge, lined up with lines A, B, & C



Mount Toilet

Use screw, with flat washer, through bushing to attach
bowl to mounting bracket.

After screws are tightened, add cap to cover bushings.

